

Installation Instructions:

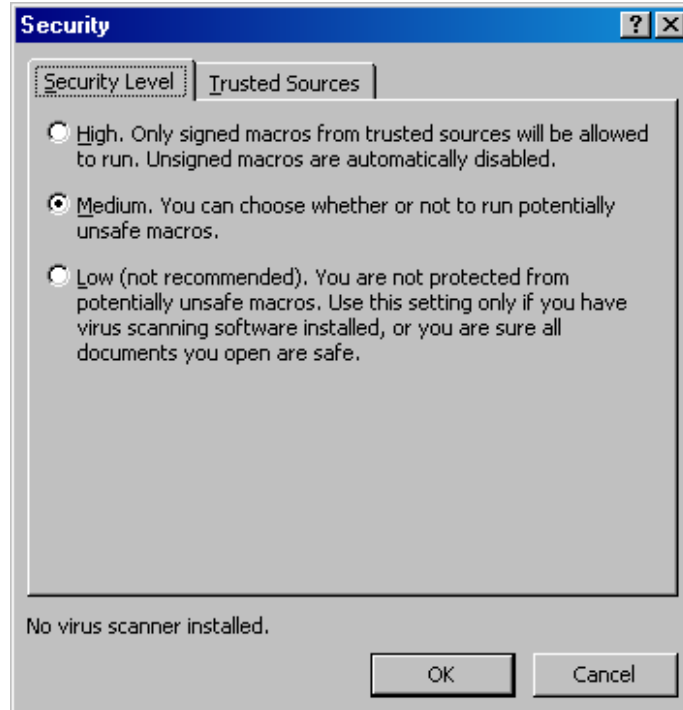
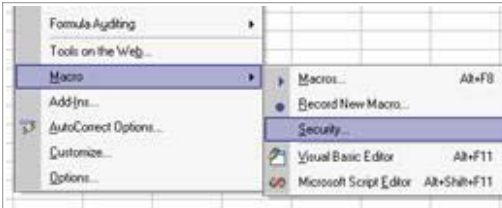
Step1:

Run **DuplicateManager.msi** (Setup) file which installs addin in your system.



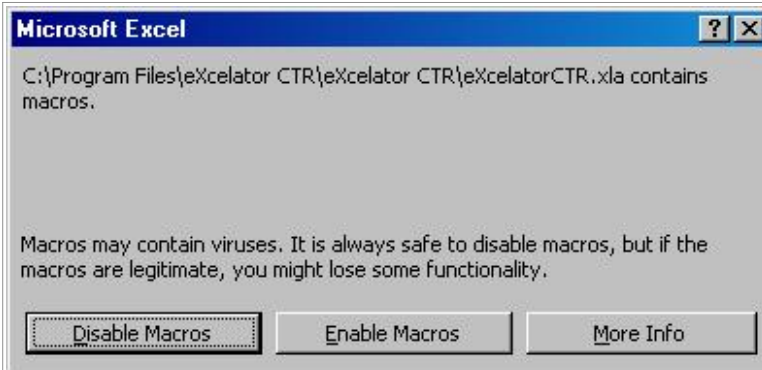
Step2:

Open Excel & Check **Macro Security**. It should be "**Medium**" to run these kind of addin.



Step3:

Double Click "**Load Duplicate Manager v1.1 for Excel**" Shortcut from Desktop to Load Addin in your Excel. Click on "**Enable Macros**" to create eXcelator CTR Menu.



Registration Instructions:

Step1:


Click on Menu "**Duplicate Manager** " from Menubar then "**Register It**".



Step2:

Click on "**Purchase**" button to make payment via paypal.

Duplicate Manager v1.1
You have Remaining **15** day(s) trial. **TechnoCom Solutions**

 You may use this evaluation copy of Duplicate Manager v1.1 upto 15 days. If you continue to use it on a regular basis, we ask that you purchase a registration. You can register online by clicking the "Purchase/Register" button, or you can order by internet or email.

Mob **+91-9811280191**
URL **www.technocomsolutions.com**
Email **technocom@gmail.com**

Customer ID

[Copyright © TechnoCom : 2006 - 2007](#)
[All Rights Reserved](#)

Step3:

Then repeat Step1 and Click "**Get Registration Key**". Fill up the form and submit it. As soon as we get your request and after realization of payment we should send you the activation key.

Step4:

After you received Activation Key, Repeat the Step1 and press "**Activate**" button. Fill the Activation Detail and submit to use hidden power of Excel with **Duplicate Manager**.

Duplicate Manager v1.1

Activation Detail

Enter the Registration Key that you have received Via E-Mail.

Register to :

Registration Key :